

Arctic Grayling in the Swan River Watershed



SWAN RIVER
FIRST NATION

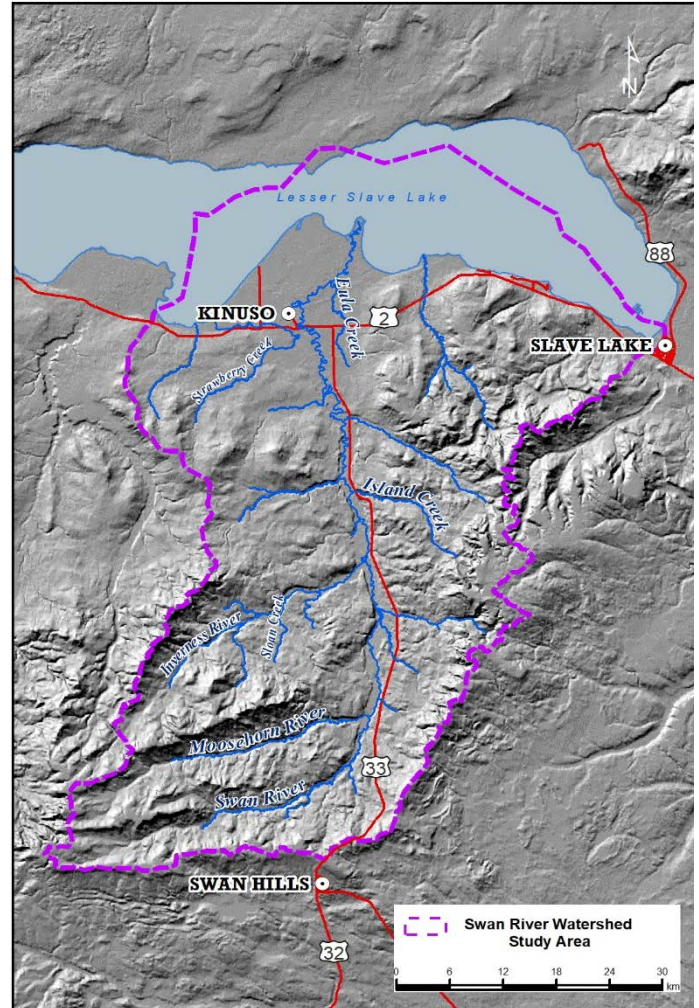
Arctic Grayling in the Watershed

Arctic grayling need different types of habitat for overwintering, spawning, and feeding. Improperly installed culverts at stream crossings can prevent grayling from accessing these important habitats. Changes to stream bank vegetation, lots of sediments in the water, and changes to water temperature also impact habitat quality for grayling.

Using information on the amount of grayling habitat upstream of stream crossings, we developed a list of high priority crossings in the Swan River watershed requiring culvert repairs (or remediation) to improve fish passage. By repairing these culverts, grayling could access a large amount of upstream habitat. We are working with owners of those crossings to improve fish movement through these prioritized road crossings. Next steps are to measure the quality of upstream habitat and identify grayling presence in the watershed.

SRFN is conducting fish habitat surveys to measure the quality of fish habitat upstream of crossings. Grayling presence in streams will be determined by detecting traces of their DNA in the water that they leave behind, called environmental DNA (eDNA). This will allow us to map what streams and tributaries grayling are using.

Repairing these crossings could restore grayling access to a large amount of good quality upstream habitat, which can help increase grayling in the Swan River watershed.



Land Users Know Best

Your knowledge could help this project. If you have insights on any of these following questions, **please contact Program Lead John Willier.**

- 1) Do you find grayling in the northern areas (upper reaches) of the watershed in the summer?
- 2) What is good grayling habitat?
- 3) Where have you seen grayling? Can you recommend streams or areas?



Funding Provided By:



In Collaboration With:



John Willier:
Ph: 780-516-1911
Email: srfnjohn@gmail.com